

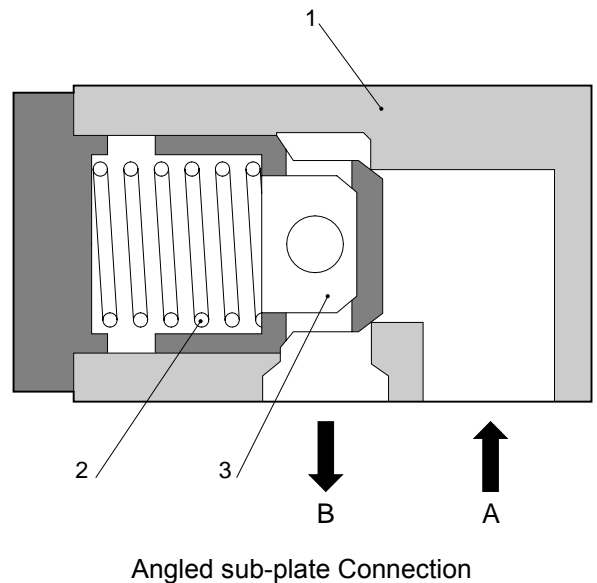
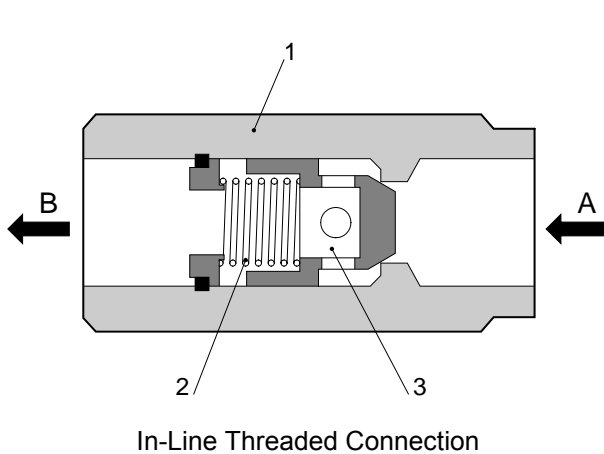
Size 52 to 150 up to 315 bar up to 6400 L/min	Check Valve Direct Acting Type C, Series 10	Data Sheet C-1003/06.99 GB
---	---	----------------------------------

Features

- ◇ In-line flange connection or angled sub-plate connection.
- ◇ High durability.
- ◇ Various options.
- ◇ Leak free enclosure in one direction.



Type C (In-Line flange Connection)



Functional Description

Type C Series 10 Check Valves are direct acting valves that allow free flow in one direction and block any reverse direction flow.

The valves consist of the housing (1), one spring (2), the poppet (3), and input and output ports.

When no fluid flows the spring (2) holds the poppet (3) in the closed position.

Fluid pressure compresses the spring (2) and opens the poppet (3) allowing the flow from port A to B. The spring force determines the pressure that the valve will open.

Fluid attempting to flow in the opposite direction will close the valve stopping the flow.

Ordering Code

C 52 F 10 / 05 V

Check Valve

Size

52, 62, 82, 102, 125, 150
(Sub-plate mounting size
52, 62 and 82 only)

Suitable Oil

No Code: Mineral Oil
V: Phosphate Ester
W: Fatty Acid Ester, Water Glycol

Type of Mounting

F: Flange Connection
P: Sub-plate mounting

Cracking Pressure

00: Without spring
01: 0.1 bar
05: 0.5 bar
15: 1.5 bar
30: 3.0 bar
40: 4.0 bar (up to size 125)

Series Number

10

Technical Data

For applications outside the following parameters, please consult Kawasaki Precision Machinery (UK) Ltd.

Maximum Operating Pressure 315 bar

Pressure Fluid Mineral oil, phosphate ester, fatty acid ester and water glycol.
Phosphate ester is only suitable for use with FPM seals.

Pressure Fluid Temperature Range -20°C to +70°C

Viscosity Range 2.8 to 380 cSt

Degree of Contamination Maximum permissible degree of contamination of the fluid is to NAS 1638 class 9. Kawasaki recommend that a filter with a minimum retention rate of $\beta_{10} \geq 75$ is used.

Maximum Flow:

Size	Size 52	Size 62	Size 82	Size 102	Size 125	Size 150
Max. Flow (L/min)	700	1100	1800	3000	4400	6400

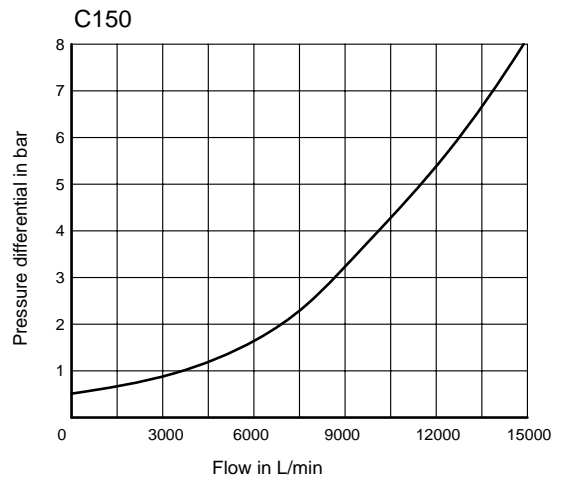
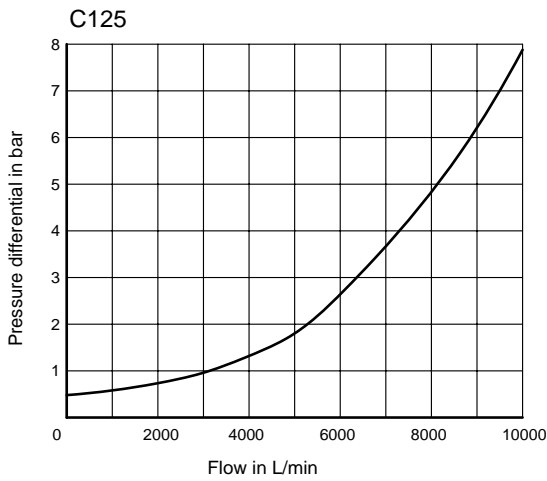
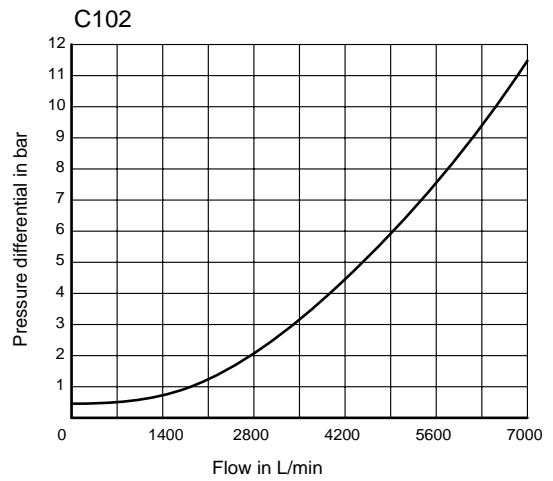
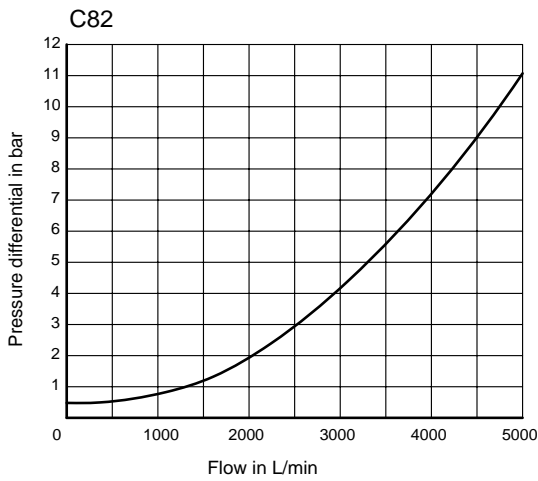
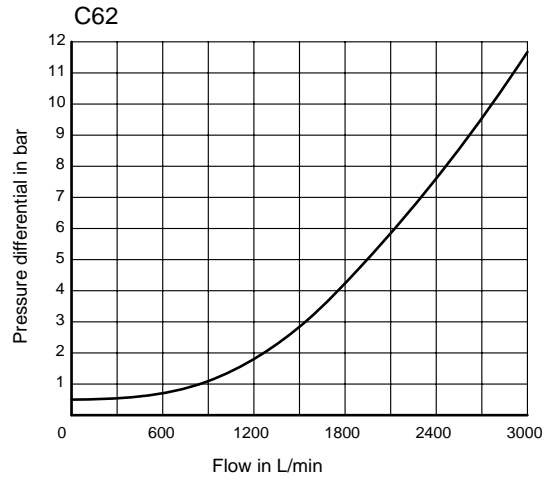
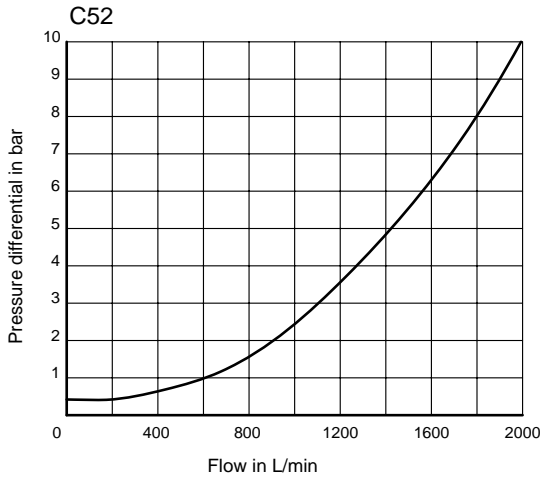
Weight:

Size	Size 52	Size 62	Size 82	Size 102	Size 125	Size 150
Flange connection	10.6 kg	15 kg	27.5 kg	50 kg	190 kg	330 kg
Sub-plate mounting	17 kg	31.5 kg	57 kg	-	-	-

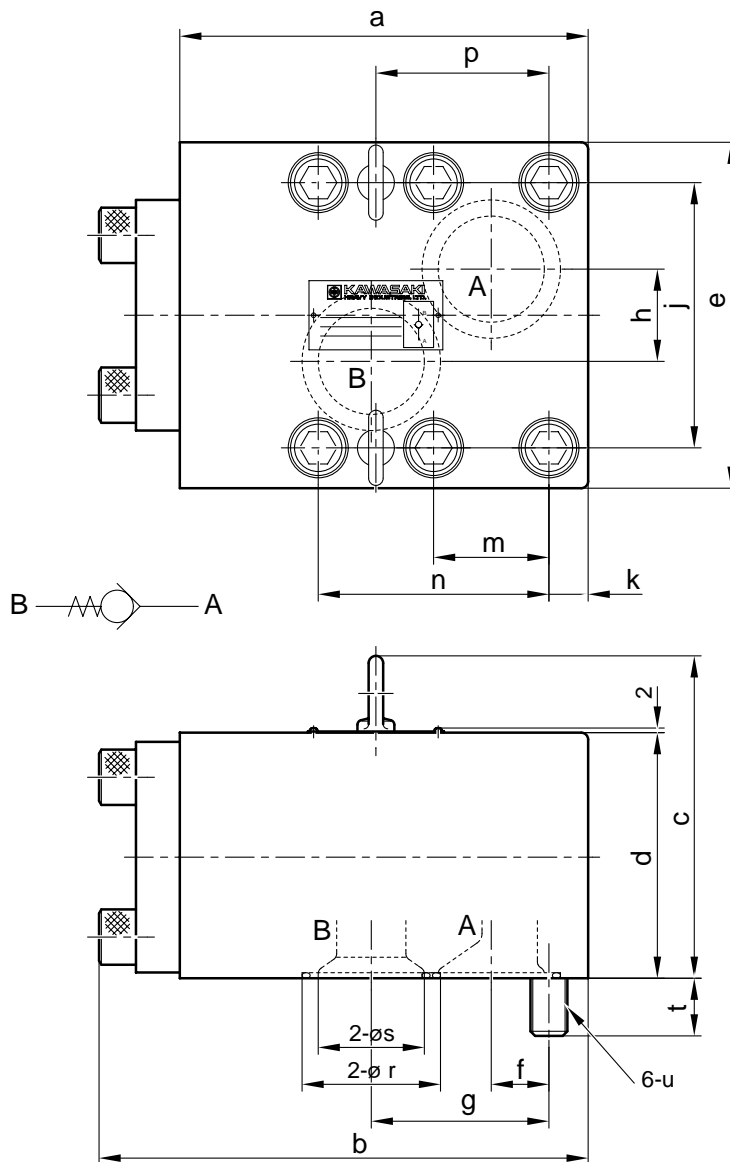


Characteristic Curves

Measured at $v = 36cSt$ and $t = 50^{\circ}C$



Unit Dimensions (Angled Valve) (dimensions in mm)

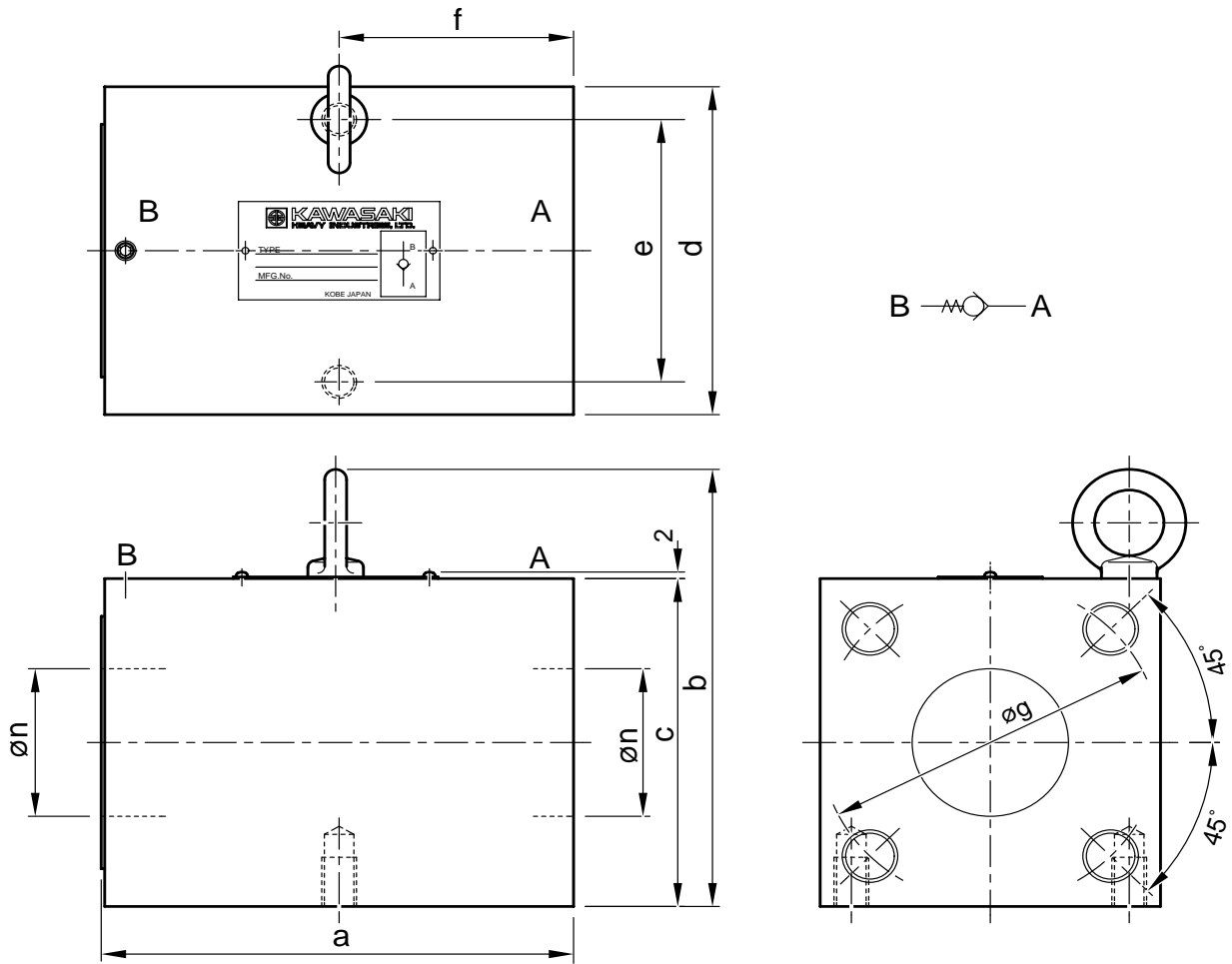


Size	a	b	c	d	e	f	g	h	j	k
52	177	212	140.5	106.5	150	25	77	40	115	17
62	224	266.5	160.5	126.5	180	34	100	40	140	21.5
82	275	325	190.5	156.5	210	30	115	50	170	35

Size	m	n	p	r	s	t	u	'O' Seal
52	50	100	75	60	50	25	M16	2-JISB2401 G55Hs90
62	65	128	96	70	60	30	M20	2-JISB2401 G65Hs90
82	70	140	105	90	80	30	M20	2-JISB2401 G85Hs90



Unit Dimensions (In-line Flange Valve) (dimensions in mm)



Size	a	b	c	d	e	f	g	h	j	k	m	n
52	135.5	132	98	100	80	67.5	98	M16	26	M10	15	45
62	165.5	152	118	120	100	82.5	118	M20	32	M10	15	55
82	195.5	182	148	150	120	97.5	145	M24	36	M12	20	72
102	245.5	220	178	180	150	122.5	175	M30	40	M12	20	90

KAWASAKI PRECISION MACHINERY (UK) LTD
 Ernesettle, Plymouth, Devon, PL5 2SA, England
 Tel: +44 1752 364394 Fax: +44 1752 364816
 E Mail: info@kpm-uk.co.uk

The specified data is for product description purposes only and may not be deemed to be guaranteed unless expressly confirmed in the contract

ALL RIGHTS RESERVED, SUBJECT TO REVISION

Model
C

Page
5.6

Data Sheet
C-1003/06.99



Intentionally Blank

KAWASAKI PRECISION MACHINERY (UK) LTD
Ernesettle, Plymouth, Devon, PL5 2SA, England
Tel: +44 1752 364394 Fax: +44 1752 364816
E Mail:info@ kpm-uk.co.uk

The specified data is for product description purposes only and may not be deemed to be guaranteed unless expressly confirmed in the contract

ALL RIGHTS RESERVED, SUBJECT TO REVISION

Model
C

Page
6.6

Data Sheet
C-1003/06.99

